



Cactus Needle

The Embroiderers' Guild of America, Inc.

Tucson Chapter

www.tucsonega.org

Vol. 43 No. 05

June 2025

EGA MISSION STATEMENT

"The Mission of the Embroiderers' Guild of America is to inspire passion for the needle arts through education and celebration of its heritage."

ELECTED BOARD 2025-2026

President

Janet Hintz

VP, Programs

Gretchen McGill

Secretary

Bonnie Heidler

Treasurer

Beth Avney

Region Rep

Raynelle Duhl

APPOINTED BOARD

By-laws:

Laura Cotter

Community Outreach:

Kathleen Garza

Hospitality:

Doris Fello

Membership:

Helen Salkowski

Education:

Laura Cotter

Ways/Means:

Tammy Krassy

Workshops:

OPEN

Librarian:

Suzanne Knepper

Newsletter:

Susan Willis

Newsletter Ads:

Susan Willis

Publicity:

Michelle Wood

Kathleen Magee

Beading:

Shawn Brown

Sharon Marchant

Historian:

Susan Willis



The last month of Spring is upon us. It's a busy one – weddings, graduations, recitals – and the last General Meeting until September's "Welcome Back" potluck. In July and August, we will continue to meet at the regular church locations for stitch-ins, but there will be no formal meetings. Don't worry, I will keep you in the loop. I will even bring my bell to the stitch-ins if that makes everyone feel more at home!

An important **NEWS FLASH**: The June 5th General Meeting and the June 12th Beading Meeting will **NOT** be held at the church as usual. There is a vacation

bible school going on, and we have been politely asked to meet somewhere else. So please note: the **June EGA** meetings will happen at:

Wheeler-Taft Library
7800 N Schisler Drive
Tucson AZ 85743

It is on the North side of Tucson, but easily accessible from the I-10 freeway. Or other routes, whatever tickles your fancy. We will be back in O'Leary Hall and Room 6 at St. Thomas church for July and August stitch-ins.

The program for the June meeting will be Japanese Flowers. Be sure and read up on the details further on in the newsletter.

We have an exciting Workshop coming up in October! Thanks to Raynelle Duhl, a Cartonnage teacher from Phoenix will be coming to show us how to make some beautiful boxes. What is Cartonnage? There are details here in the newsletter, and we will be talking about it at the June 5th meeting. If you think you might want to save your spot, bring your checkbook!

Our Chapter has the honor of being the most generous organization donating food to St. Thomas' food drive! So, let's keep our number one spot – remember your non-perishable food donation in June. There will be a box at the meeting to collect the items. Yay us!

This is the last newsletter until September comes around. But I will be sending emails to remind you of EGA events, as usual. Hope to see you at one of them!

Janet

HOSPITALITY

Doris Fello

Refreshments for the June meeting will be provided by Doris Fello, Maura Robinson and Susan Willis.

NEWSLETTER

Susan Willis / willissg.tega@outlook.com

The newsletter will be on summer hiatus for July and August.

The next newsletter deadline for the **September** issue is **August 23, 2025**.

MEMBERSHIP

Helen Salkowski / hsalkowski@yahoo.com



Please welcome our newest Tucson Chapter members Hope Burdan and Sharla Ronstadt.

May is RENEWAL TIME for most of our members, and by now, if your membership expires May 31, 2025, you should have already received one or possibly two reminders from EGA National along with a link to make renewal SUPER EASY. Please let me know if you are having difficulty, and I will try to help.

If you are a Plural member of Tucson Chapter, then you will have received a renewal reminder directly from me, because Plural members still pay their dues directly to our Chapter.

And, if you haven't received a renewal letter, then just relax...your membership expires one year after you joined, so you will get a notice a month ahead to give you plenty of time to renew.

Any questions or difficulties, just contact me. email: hsalkowski@yahoo.com, text or phone 602-463-4001

We have planned many opportunities throughout the coming year to stitch together, to learn new skills, and always the inspiration of sharing our common love of needlework and snacks.



So, we hope to have you back with us for 2025/26.

Helen

Thanks to Suzanne and Nancy

We had over 20 members participate in May's program, Hardanger. Thanks so much to Nancy Hahn and Suzanne Knepper for teaching this skill and especially for developing the instructions that we used to try out this Norwegian embroidery technique. Personally, I have never experimented with Hardanger before, and their clear, concise, and detailed instructions made it easy (and I felt confident cutting the threads!).

I am working with the Workshop committee to see if we can hold a one-day Hardanger workshop in the fall. We hope to make it a follow-on to this program, so people with little to some experience can continue to build their drawn thread, cutwork, and needle weaving skills. Look for our upcoming survey about workshops if you would be interested in attending. Your feedback is needed.

June's Program



Kanzashi – Japanese Fabric Flowers

In Japan, Kanzashi are hair ornaments used in traditional Japanese hairstyles. In the West, Kanzashi or Japanese fabric flowers refers to flowers formed from layers of folded cloth and sewn together. At our June program, we be trying out this fun and easy needle craft as a kickoff to summer.

We will use templates to cut out fabric petals and stitch them together with a button as the center. Participants will need to bring fabric scissors, and a sewing needle. The chapter will provide fabric, thread, buttons, and templates or you can bring your own. If you have excess quilting fabric, sewing thread or shank buttons you would like to share, they will be enjoyed by other members of the chapter.

PROGRAMS-continued

We will be using cardboard templates as our patterns. However, Clover makes a variety of plastic templates to move the process along faster. If you prefer to use a plastic template, you can purchase it on the Clover website (<https://clover-usa.com/collections/flower-makers?srltid=AfmBOorPAefXqjGC45MIJIV5cWWafT9hGfvxQbMAtk5dJv-gVJLn0e4i>) or on Amazon

(https://www.amazon.com/s?k=clover+flower+maker&crd=TETKDJ4X1RX3&srefix=clover+flower+%2Caps%2C525&ref=nb_sb_ss_ts-doa-p_1_14)

If you did not sign up at the May meeting and want to join us, please RSVP to Gretchen at casademcgill@gmail.com by Friday, May 30th. Also, if you have any quilting fabric, shank buttons or thread that you would like to share with other members, please let Gretchen know.

Upcoming Programs

Our July and August meeting will be Stitch-Ins, so no programs will be offered in these months. We return in September with our annual “What I Did This Summer” Show and Tell potluck.

We already have tentative programs planned for the October and November’s program that will be announced in the September newsletter (published in August).

And of course, in December we will have our Holiday Potluck and the always fun (and a little raucous) gift exchange.

As always, if you have an idea for a program or would like to share your skills with fellow members, please contact me at casademcgill@gmail.com.



Please contact me to arrange borrowing books from the library.

Here is the list of books available in our extensive library:

<https://cloud.collectorz.com/egalibrarytucson/books>

In addition, we have several hundred books listed on our website: www.tucsonega.org
[Member Resources Library Books](#)

IMPORTANT WEBSITES

tucsonega.org

<https://psrega.org>

egausa.org

facebook.com

stitchingjules.com

[Instagram.com](https://www.instagram.com)

antiquepatternlibrary.org

archive.org

threadabead.com

rsnstitchbank.org/stitch

Tucson EGA Chapter website

Pacific Southwestern Region website

EGA National website

EGA Stitch A Long / Facebook Stitch A Long (SAL) group. Region now has a Facebook page, so, look us up and like the page.

EGA Tucson- Facebook page

listing of floss tube videos (cross stitch)

#tucsonstitchers or #TucsonEGA

Antique Pattern Library

Antique and vintage book resource

Patterns for beaded objects

Royal School of Needlepoint stitch bank for reference to many stitches



**Cathey's
CHRISTMAS
in July**

This year's event benefits
CHICKS n Chaps

Tucson Chicks n Chaps is a non-profit organization dedicated to raising funds for local families affected by breast cancer. They are also passionate about promoting the sport of rodeo and the Western lifestyle. The organization believes in empowering women to embrace their strength and define their future. They strive to make a difference in our community by providing support and resources to those in need. Visit tucsonchicksnchaps.org for more information.

Thursday, July 24 & Friday, July 25
 from 9am-5pm at Cathey's Down the Block at 5851 E. Speedway Blvd.
Kimberbell's Two-Day "Merry Christmas Y'all" Pillow Sit N' Sew!
 \$149 includes machines, project kit, continental breakfast, lunch, snacks and refreshments both days!

This year's Christmas in July features Kimberbell's "Merry Christmas Y'all" pillow class on Thursday and Friday! Students will enjoy hands-on learning while creating this adorable Western themed Christmas pillow with classmates in a fun team-sewing environment.

Saturday, July 26
 from 11am-2pm at Cathey's Down the Block at 5851 E. Speedway Blvd.
Cathey's Traditional Christmas in July Extravaganza
 \$49 includes lunch, snacks, and refreshments
[\$10 will be donated to Tucson Chicks n Chaps!]

The party continues on Saturday with the traditional customer and staff challenge showcase PLUS entertainment, amazing treats, prizes, and of course a visit from Santa Claus! Anyone can attend Saturday's Extravaganza! Participation in the challenge is not required!



At Kimberbell's two-day machine embroidery event, you'll receive the Attendee Project Kit to make this adorable Western Christmas pillow!

KIMBERBELL

**REGISTER FOR ALL
THREE DAYS FOR \$198**
 Call or stop by any location to register!

Visit catheys.com for the customer and staff challenge!

Cathey's
SEWING & VACUUM

5701 E. Speedway Blvd.
(520) **721-4000**

5851 E. Speedway Blvd.
(520) **504-5858**

8700 N. Oracle Rd.
(520) **797-7177**

18805 I-19 S. Frontage Rd. B103
(520) **300-5002**

Cathey's Store hours: Monday-Friday 9am - 6pm / Saturday 9am - 4pm / Closed Sunday catheys.com

BEADING

Sharon Marchant
Shawn Brown

Our May beading meeting was all about bezeling. We learned how to do a Right Angle Weave (RAW) bezel around a round or oval object like a Rivoli or Cabochon. As we head into graduation season and summer our meetings tend to get smaller which allowed all those wanting to try this month's project with plenty of individual attention and assistance. Take a look at the results!

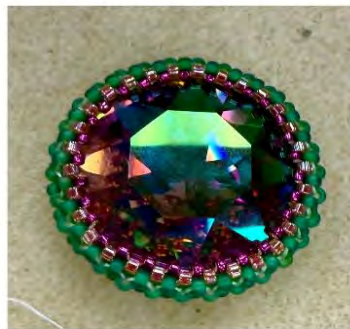


The front and back of a beautifully bezeled stone cabochon by Rachel Wisdom



Our May Beading meeting attendees hard at work

Bezeled Rivolis by Bonnie Heidler,
Kathleen Garza, Marian Hill,
Mary Lor, and Debra Williams



BEADING - continued -

Our next EGA beading group meeting will be on Thursday, June 12th from 10 am to 2 pm at the Wheeler Taft Abbott Sr. Library, 7800 N Schisler Dr, Tucson, AZ 85743. We will be back at the church in July. As usual, all EGA members are invited to join us, not just the ones who bead. Also, you're welcome to bring lunch or snacks - and food pantry donations are always welcome.

For the summer we will continue work on our necklaces by working on a Cubic Right Angle Weave (CRAW) rope (using the CRAW technique we learned in April) and a beaded toggle clasp (further building on our CRAW skills) to go with our bezeled item(s) to create a necklace. As the summer continues, individual help will be available to help you make a beaded bail to attach your bezeled item(s) to the CRAW rope at the end of the summer or as our first program in the fall (depending on how far we get over the summer). Even if you can't be there for all of the summer meetings, you can still work on this project if you are interested - we can provide help at any stitch-in that you can attend.

Supplies needed for the summer meetings size 11/o seed beads, 15/o seed beads, and 11/o Delica beads, any additional items you want to bezel around. Most of you will want to do your CRAW ropes in size 11/o seed beads. If you have pearls or other larger beads you would like to incorporate as part of your necklace, bring those too.

Looking forward to working on our necklaces together this summer,

Shawn and Sharon

NEEDLEWORK • CLASSES • GIFTS • CARDS • TOYS

You Helped Us Do This! Thank You!

The West's 2025 grantees include the following local non-profit organizations:
Candlelighters Childhood Cancer Foundation • Emerge • Erik Hite Foundation
Mobile Meals of Southern Arizona • Children's Advocacy Center of Southern Arizona
Tucson Family Food Project • Wheels for Kids

STORE HOURS:
Monday through Saturday
10am to 4pm

River Center @ Craycroft
5615 E. River Road, Suite 101
Tucson, Arizona 85750
www.thewestinc.com

Our vision and mission is to improve the quality of life in the Tucson area and provide grants to qualified Tucson-area non-profit organizations.

**the West INC**

520.299.1044

Stitch in Public: A variety of stitch in public gatherings occur throughout the month. Please come out and join with other stitchers to enjoy good company and get some stitching done in a social environment.

2nd Saturday: Saturday get together meet from 10:00am to 2:00pm at public libraries. It is a great opportunity for all members to gather to stitch in public. Its timing, the weekend after the meeting, provides a great opportunity for those who can't make the general meeting to catch up on chapter activities with those who have attended the meeting. See the Save the Date tab at the EGA website ([www.https://tucsonega.org](https://tucsonega.org)). Select Meetings and Workshops for location.

3rd Tuesday: This evening gathering meets from 5:30pm to 7:30 pm and is held at two Barnes & Noble locations: Broadway and Rosemont and Foothills Mall. A great opportunity for all members (especially those who work or have other daytime commitments) to come out for some social stitching time.

Every other Friday: This afternoon gathering meets from 1:00pm – 4:00 pm and is held at the Starbucks at 4702 E Grant Road, the Southeast corner of Grant and Swan. Originally a beading group that was not affiliated with our chapter, they welcomed all members to come out for a social afternoon of stitching fun. Check the Save the Date tab on the website for dates.



OUTREACH- continued

Report Back on the Pima County Fair

Thank you to all the volunteers who made this event a great success. We had a joyful time sharing our love of needlework and bonding with each other. Moreover, you shared your work in our glass case to create a truly eye-catching display. We had many people stop at our booth, and if they even looked our way, we called them over to encourage them to join us. We gave out all the brochures I had printed and my stack of cards as well. We collected several e-mail addresses of people who were interested in joining and Janet immediately sent them an invitation to come to our next meeting.

This year Jessica Collazo and I developed some surface embroidery patterns to be used as a kit with denim squares, hoops and thread. We gave out 12 of the patterns, 5 with the denim square and hoop. We used the flag pin that we made last year to create a beginner canvas kit that included canvas, thread, a felt square and a pin back. Five people took these home. Jessica's beginner cross stitch kits continued to be the most in demand and we gave away 35 of these. In addition, we had cross stitch magazines that we bundled with Aida and embroidery thread that everyone enjoyed (as well as our stock of free patterns).

We had a few members submit their work for the fair. It really showed off how talented our members are. I hope next year more of our members can be enticed to submit their work.

I also want to thank all the people who volunteered their time to put together kits, fold brochures and bundle the magazines. Without you, we at the fair would have much less to give away and that is how we draw people to our booth.

Examples of our new surface embroidery patterns



Kathleen

SEMINAR 2027

SAVE THE DATE!!!

**EGA 2027 NATIONAL SEMINAR WILL BE IN
TUCSON!!!**

SEPTEMBER 15-19, 2027

LOEWS VENTANA CANYON RESORT



We are looking for volunteers for several committees. Here is a brief description of each position:

Pop Up Shop Chair:

Responsible for obtaining vendors for pop up shops

Seminar Central Chair:

Develop timeline to conform to schedule provided by National; Insures information is posted in a timely manner

Public Relations Chair

Collects information; sends info to Needle Arts

Handbook Chair

Obtains quotes for the handbook; collects information for the handbook; sees to distribution of the handbook

Promotional Sales Chair

Locates possible merchandise; markets merchandise

Tours Chair

Arranges for tours

If you would like to volunteer or would like more information about the position, contact:

Pam Brummit at brummit75@gmail.com or call at 918-645-5775

Pam Brummit

2027 Seminar Chair

SAVE THE DATE

St. Thomas the Apostle has bible school in June, and we will not be able to meet there for the month of June only. Instead, we will meet at the Wheeler Taft Library in their meeting room for both the general meeting on June 5th and the beading meeting on June 12th. The Wheeler Taft Abbett Library is located at 7800 N. Schisler Dr. in Marana. It is just west of I-10 off Cortaro Road. The major cross streets are Cortaro and Silverbell.

We have the meeting room from 10 am until 2 pm for both meetings. We are allowed to have food so we will have snacks provided for the general meeting. We are not allowed to collect money so we will not have an opportunity basket at either meeting. FYI, the library is not open until 10:00 a.m. so we will have to set up before we start our meetings.

We will return to St. Thomas the Apostle in July for our stitch ins where we will have an opportunity basket up for raffle due to the cancellation in June. If you have any questions, please contact me.

Michelle



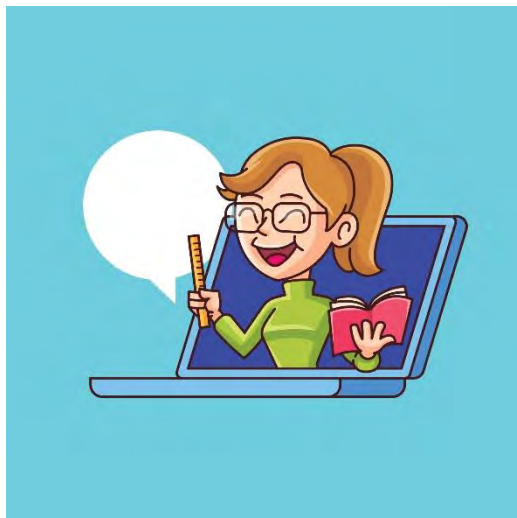
EGA EDUCATION DEPARTMENT

Do you enjoy the EGA Petite Projects and other Education Publications? Do you wonder how we get so many new, fun Petite Projects? Do you want a position that gives you the first look at proposed Petite Projects? Do you want a position that you can do from home, one that doesn't require you to attend any meetings, one with no deadlines? What if the only computer skills you need are reading and writing emails with attachments and using Microsoft Word?

If so, we have a job for you. The EGA Education Department is looking for someone to fill the remainder of the Education Publications Chair's term which ends at the 2027 EGA Seminar. The current chair, Mari Bangs, has resigned for health reasons.

You would work with the Magazine Editor, the Director of Education and the webmaster to put new Petite Projects on the EGA Website. You would also coordinate the pilot stitchers for each proposed Petite Project.

If this sounds like the perfect job for you, please contact Deb Berger, Director of Education (education@egausa.org). There will be a transition period for this important position. Deb will connect you with an experienced member who will work with you during the transition.



SAVE THE DATE - 2025
June, July, August

JUNE 2025

June 5

Tucson Chapter EGA Meeting
Wheeler Taft Abbott Sr Library
7800 N. Schisler Drive
(Cortaro exit off 10 Fwy)
Tucson, AZ 85743
(520) 594-5200
10:00 am – 2:00 pm

June 6

Bead & Needlework stitch-in, Starbucks
SE corner of Swan and Grant
1:00 pm to 4:00 pm

June 12

Tucson Chapter EGA Beading Meeting
Wheeler Taft Abbott Sr Library
7800 N. Schisler Drive, Tucson 85742
(Cortaro exit off 10 Fwy)
10:00 am – 2:00 pm

June 14

Saturday stitch-in at Martha Cooper Library
1377 N. Catalina Ave., Tucson, AZ 85712
10:00 am to 2:00 pm

June 17

Evening stitch-in, The Café at Barnes & Noble
5:30 pm – 7:30 pm
At both Foothills Mall and
Broadway/Rosemont

June 20

Bead & Needlework stitch-in, Starbucks
SE corner of Swan and Grant
1:00 pm to 4:00 pm

JULY 2025

- July 3** **Stitch-in only. Chapter meeting and programs on summer hiatus.**
St. Thomas the Apostle Parish, O'Leary Hall
10:00 am – 2:00 pm
- July 10** Tucson Chapter EGA Beading Meeting
St. Thomas the Apostle Parish, Classroom 6
10:00 am – 2:00 pm
- July 12** Saturday stitch-in at Martha Cooper Library
1377 N. Catalina Ave., Tucson, AZ 85712
10:00 am to 2:00 pm
- July 15** Evening stitch-in, The Café at Barnes & Noble
5:30 pm – 7:30 pm
At both Foothills Mall and
Broadway/Rosemont
- July 18** Bead & Needlework stitch-in, Starbucks
SE corner of Swan and Grant
1:00 pm to 4:00 pm
- July 29** Evening stitch-in, The Café at Barnes & Noble
5:30 pm – 7:30 pm
At both Foothills Mall and Broadway/Rosemont

AUGUST 2025

- August 1** Bead & Needlework stitch-in, Starbucks
SE corner of Swan and Grant
1:00 pm to 4:00 pm
- August 7** **Stitch-in only. Chapter meeting and programs
on summer hiatus.**
St. Thomas the Apostle Parish, O'Leary Hall
10:00 am – 2:00 pm
- August 9** Saturday stitch-in at Martha Cooper Library
1377 N. Catalina Ave., Tucson, AZ 85712
10:00 am to 2:00 pm
- August 14** Tucson Chapter EGA Beading Meeting
St. Thomas the Apostle Parish, Classroom 6
10:00 am – 2:00 pm
- August 15** Bead & Needlework stitch-in, Starbucks
SE corner of Swan and Grant
1:00 pm to 4:00 pm
- August 19** Evening stitch-in, The Café at Barnes & Noble
5:30 pm – 7:30 pm
At both Foothills Mall and
Broadway/Rosemont
- August 29** Bead & Needlework stitch-in, Starbucks
SE corner of Swan and Grant
1:00 pm to 4:00 pm



September 4, 2025

*EGA Chapter Meetings return
St. Thomas the Apostle Parish, O'Leary Hall
10:00 am - 2:00 pm*